

# DO-IT-YOURSELF WEB PAGES

## Civil/Environmental Engineering Course Website

### General Information:

- The CEE Course Website address is <http://pas.ce.wsu.edu/>
- The IP address used to FTP files to the server is 134.121.79.13
- HTML is an abbreviation for: HyperText Markup Language

### Setup Instructions:

- Communicate to Tom Weber (website administrator) the Course Number, Course Title, and a username and password to be used for FTP purposes.
- Tom will edit the website homepage to include your course, create a link to your website directory, and create an account for you to FTP files to the server.
- On your personal computer, create a new directory (or sub-directory) to be used as your website.
- Use Microsoft Word (or any other HTML text editor) to create your homepage. The homepage must be named: *index.htm*
- Create additional pages as needed using the *Insert Hyperlink* feature of the editor to create links from one page to another.
- Test the website on your computer.
- When satisfied that the website is in order, FTP any new or edited files to your directory on the CE Course Website.

### FTP Instructions:

To ftp to your website you can use:

1. Internet Explorer to the URL: ftp://pas.ce.wsu.edu/'your course number'  
( i.e. *ftp://pas.ce.wsu.edu/CE211*) or
2. Any FTP program (a link to a FTP program, *pkftp32*, is located on the homepage)

---

### Setup instructions for Winsock FTP32:

- Save the program to a temporary directory
- Execute the file *pkftp32.exe*
- Following installation, start the FTP program and create a NEW profile for your website directory.
- Information for the new profile will include: a **PROFILE NAME** (use the Course Number), the **HOST NAME** (*pas.ce.wsu.edu*), the **USER ID** (the server account given to you by the website administrator), and the **LOCAL PC** address (the website's directory address on your computer). *For security reasons, do not check the box to Save the Password.* See Figure 1.

- **SAVE** the profile before hitting the OK button.
- Select the **OK** button and type in the password when instructed.
- After connection, your computer and the local directory is displayed on the left side of the program (LOCAL SYSTEM) - the website server and your course directory on the right side (REMOTE SYSTEM). Transfer of your files to the server is accomplished by highlighting the files to transfer on the left and selecting the → arrow. See Figure 2.

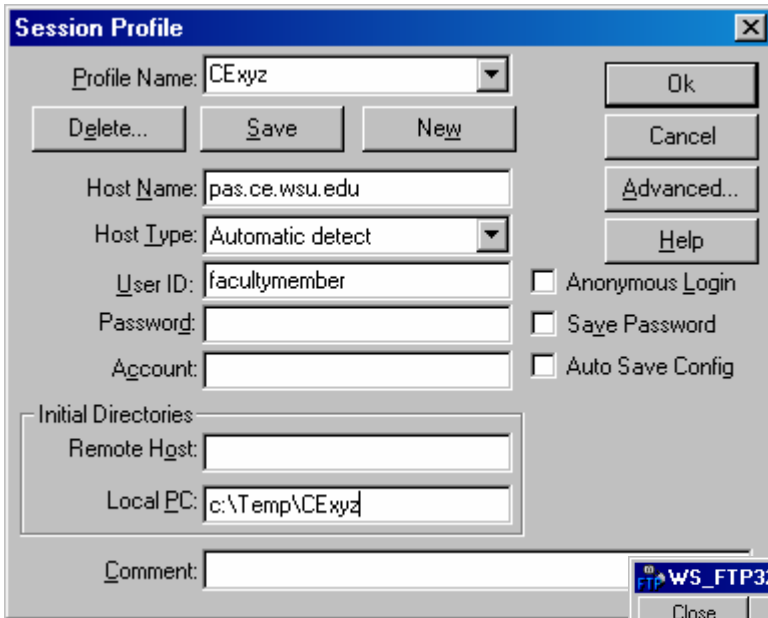


FIGURE 1

FIGURE 2

